

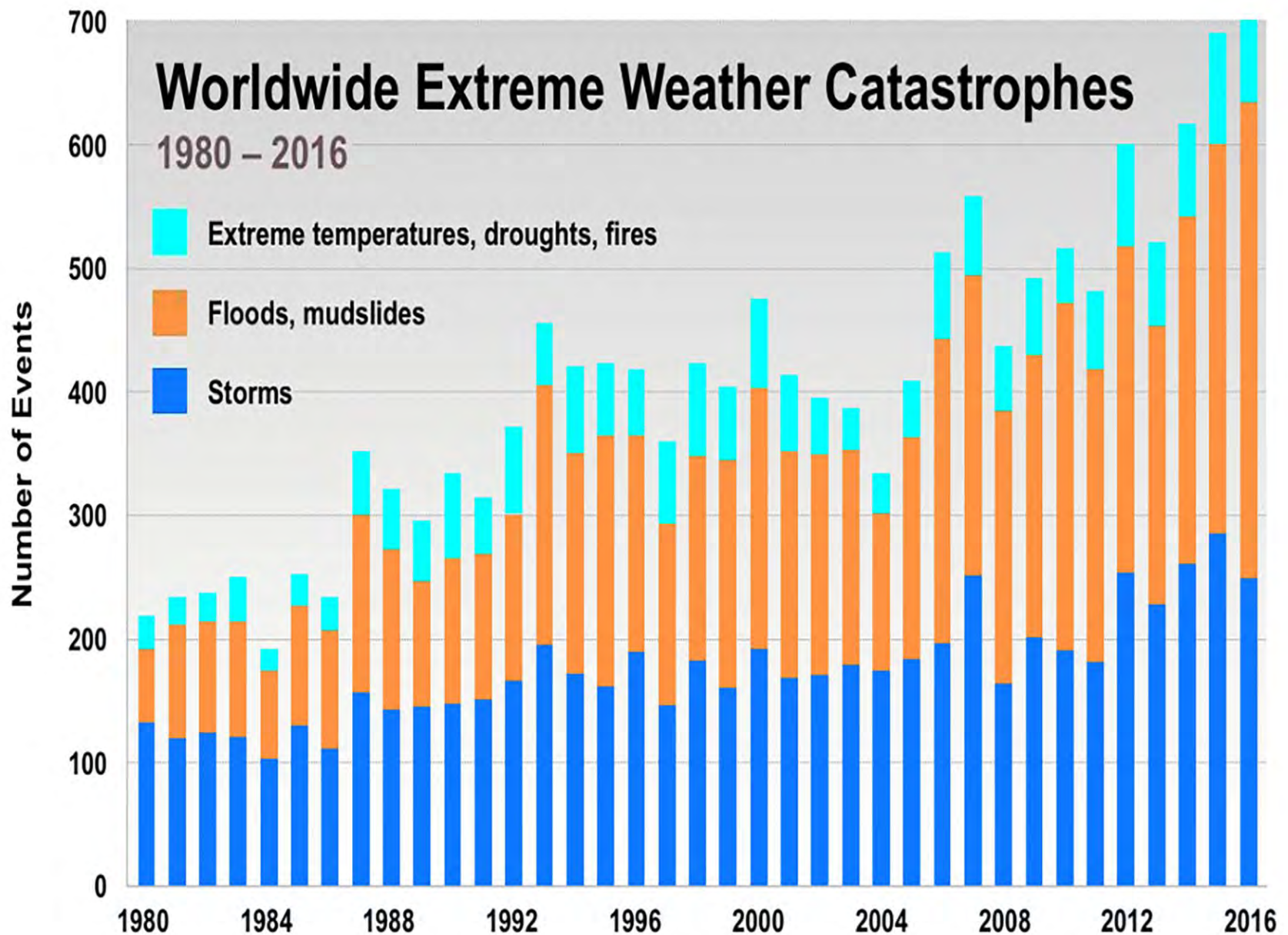


Community
Environmental
Council

CLIMATE RESILIENCE IN SANTA BARBARA & VENTURA COUNTIES



CLIMATE RESILIENCE = the ability of our social and ecological systems to withstand and adapt to the variable and extreme weather associated with climate change.



Thomas Fire

Dec. 4, 2017 – Jan. 12, 2018

2 deaths

281,893 acres burned

1,063 structures destroyed

104,607 residents
evacuated

Over a quarter million
customers without
electricity

Total cost:\$2.2 billion in
damages and suppression



Montecito Debris Flow

Jan. 9, 2018

21 deaths, 2 still missing

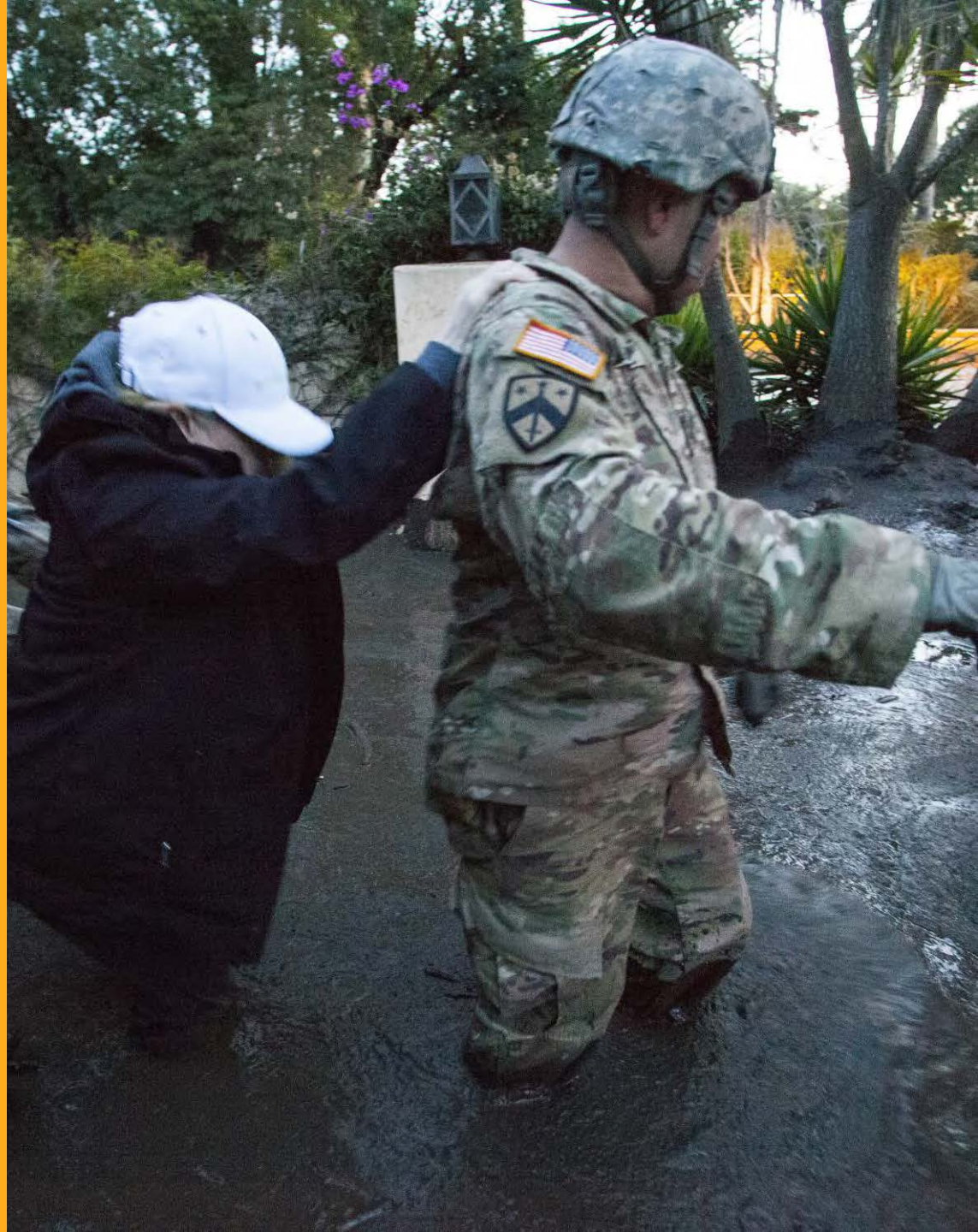
163 people hospitalized

436 homes damaged or
destroyed

12 day closure
of U.S. 101

\$50 million in emergency
response and clean up

\$177 million in property
damage





"This is the new
normal ... this
could be
something that
happens every
year or every few
years,"
Gov. Jerry Brown



CALIFORNIA'S FOURTH
CLIMATE CHANGE
ASSESSMENT

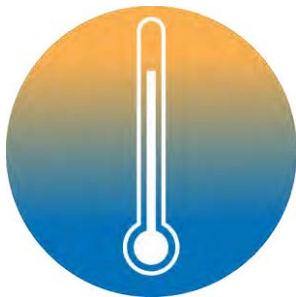
Central Coast Region Report



Coordinating Agencies:



CALIFORNIA'S CLIMATE RISKS



Temperature



Sea Levels



Snowpack



Heavy Precipitation Events



Drought



Area Burned by Wildfire

17 OF THE 18 HOTTEST YEARS ON RECORD HAVE OCCURRED SINCE 2001

2016

2017

2015

2014

2010

2005

2007

2013

2009

2012

2006

1998

2002

2003

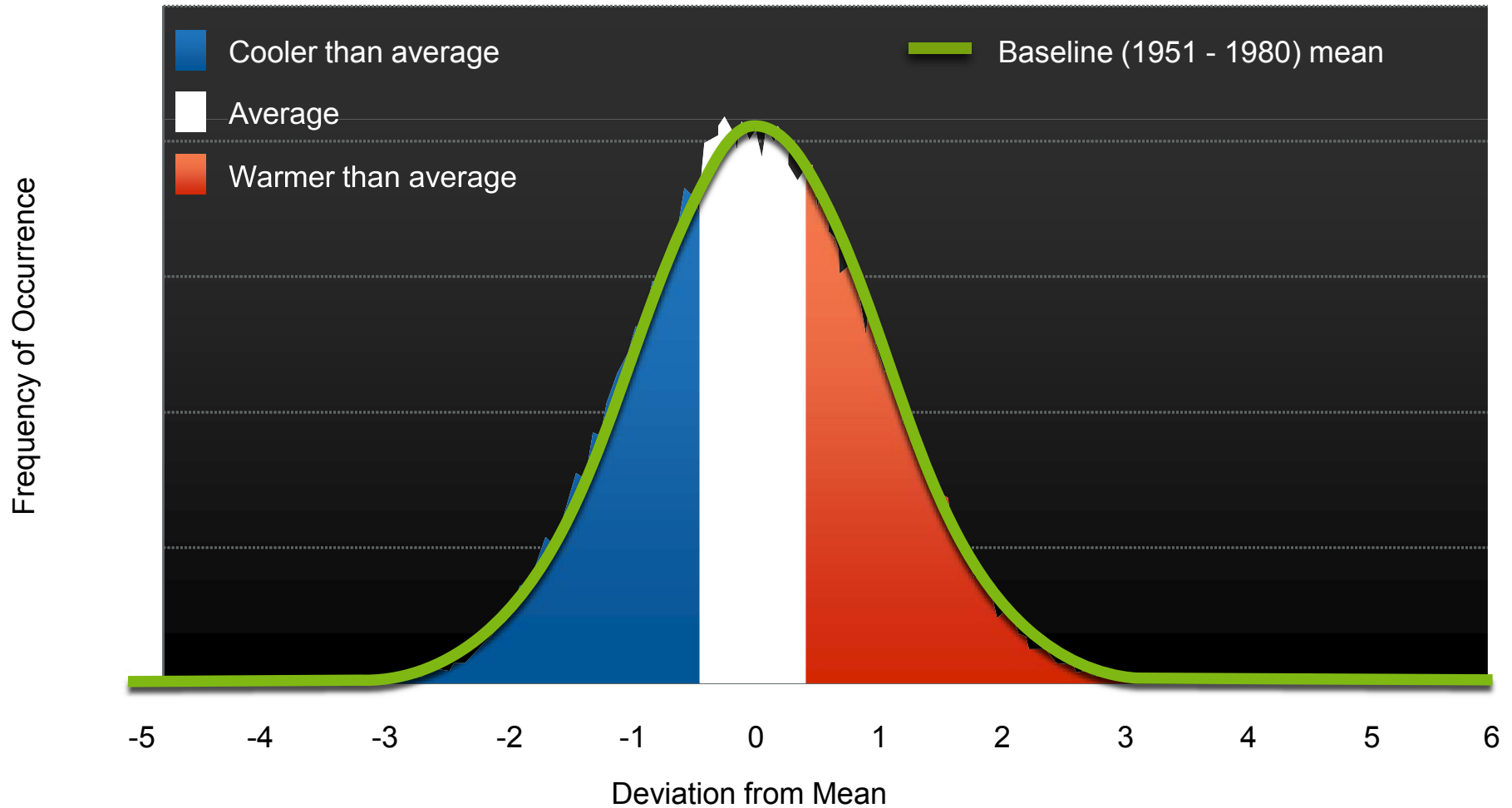
2011

2004

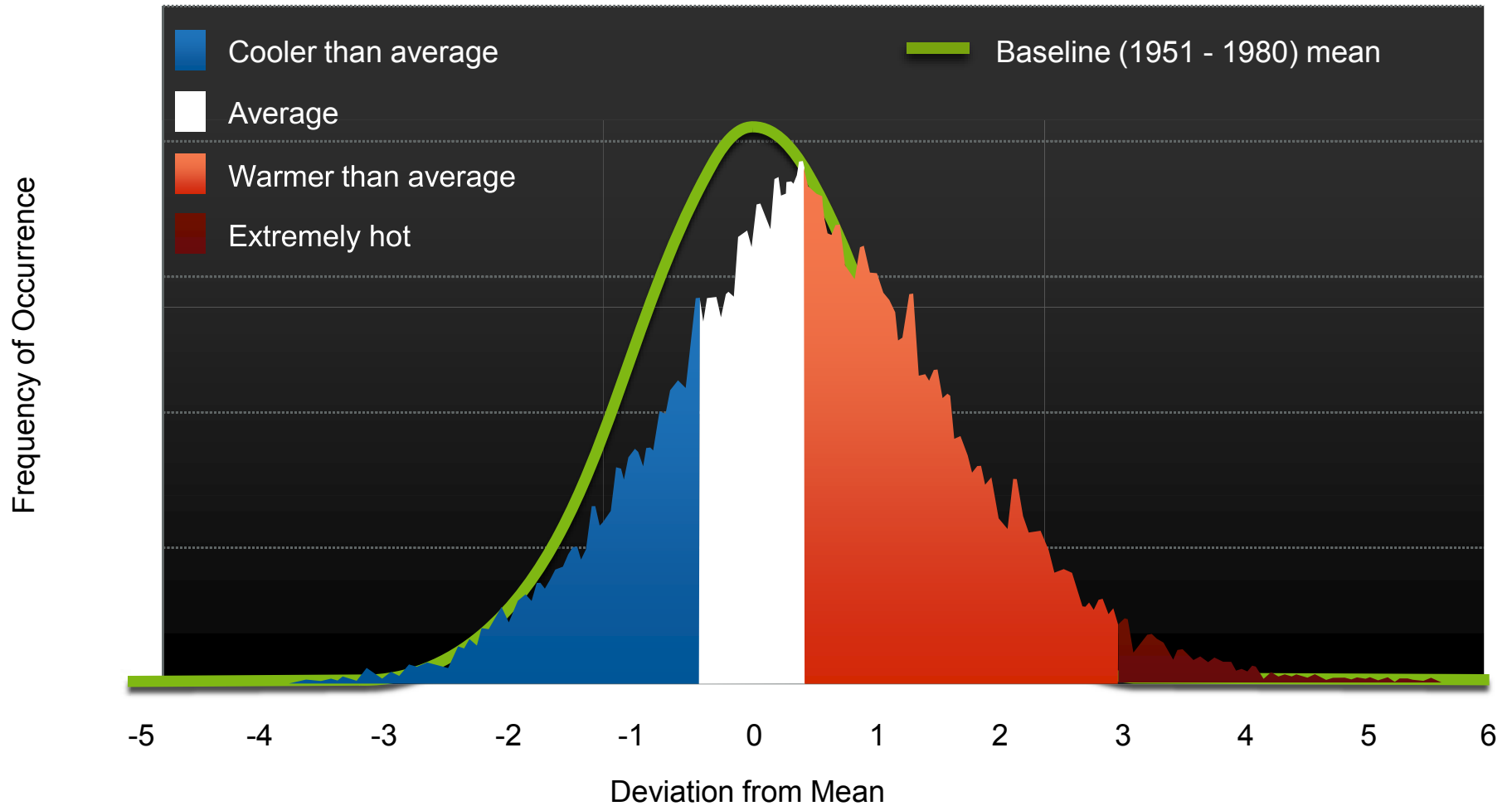
2001

SUMMER TEMPERATURES HAVE SHIFTED

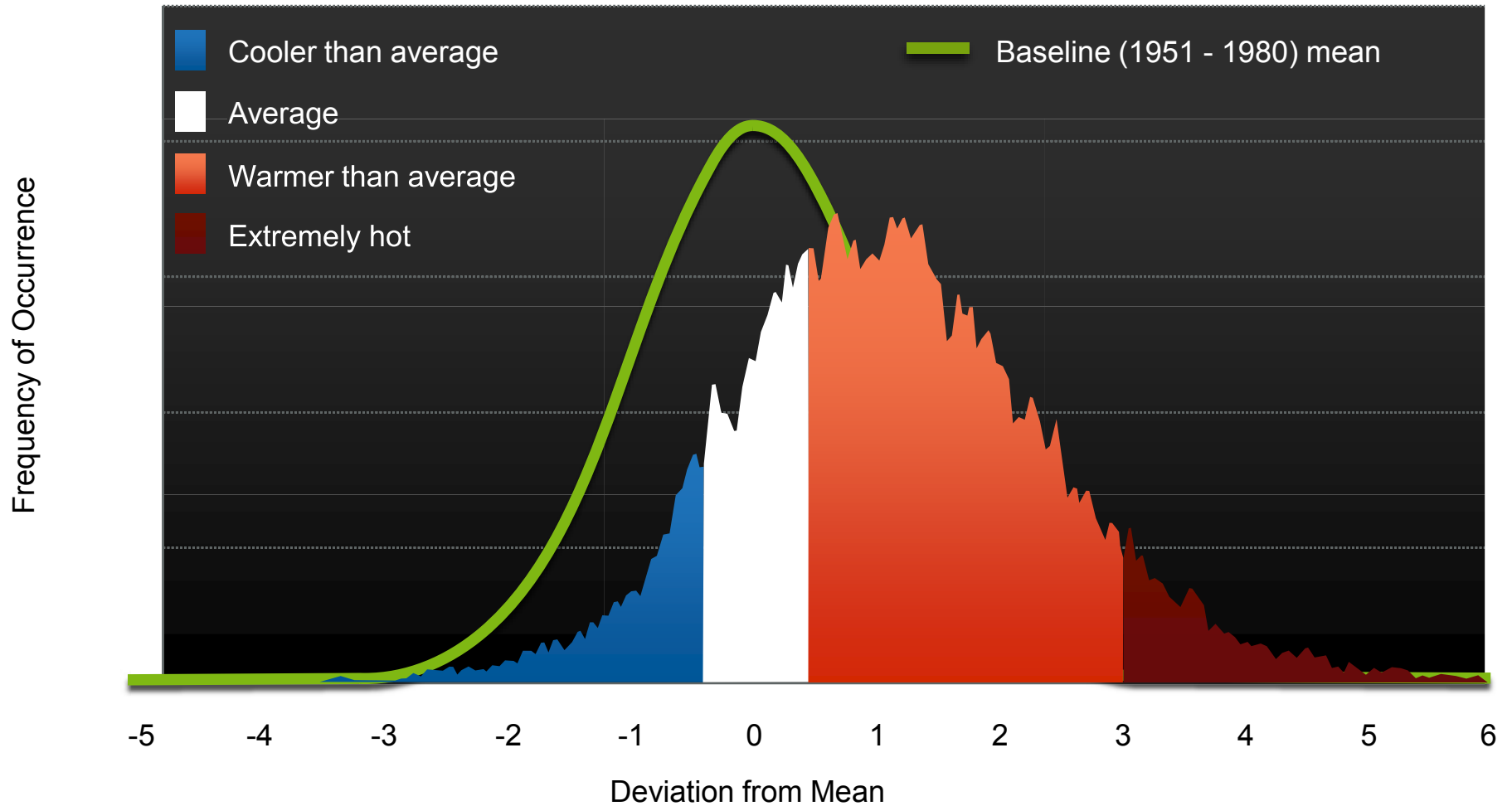
1951 – 1980



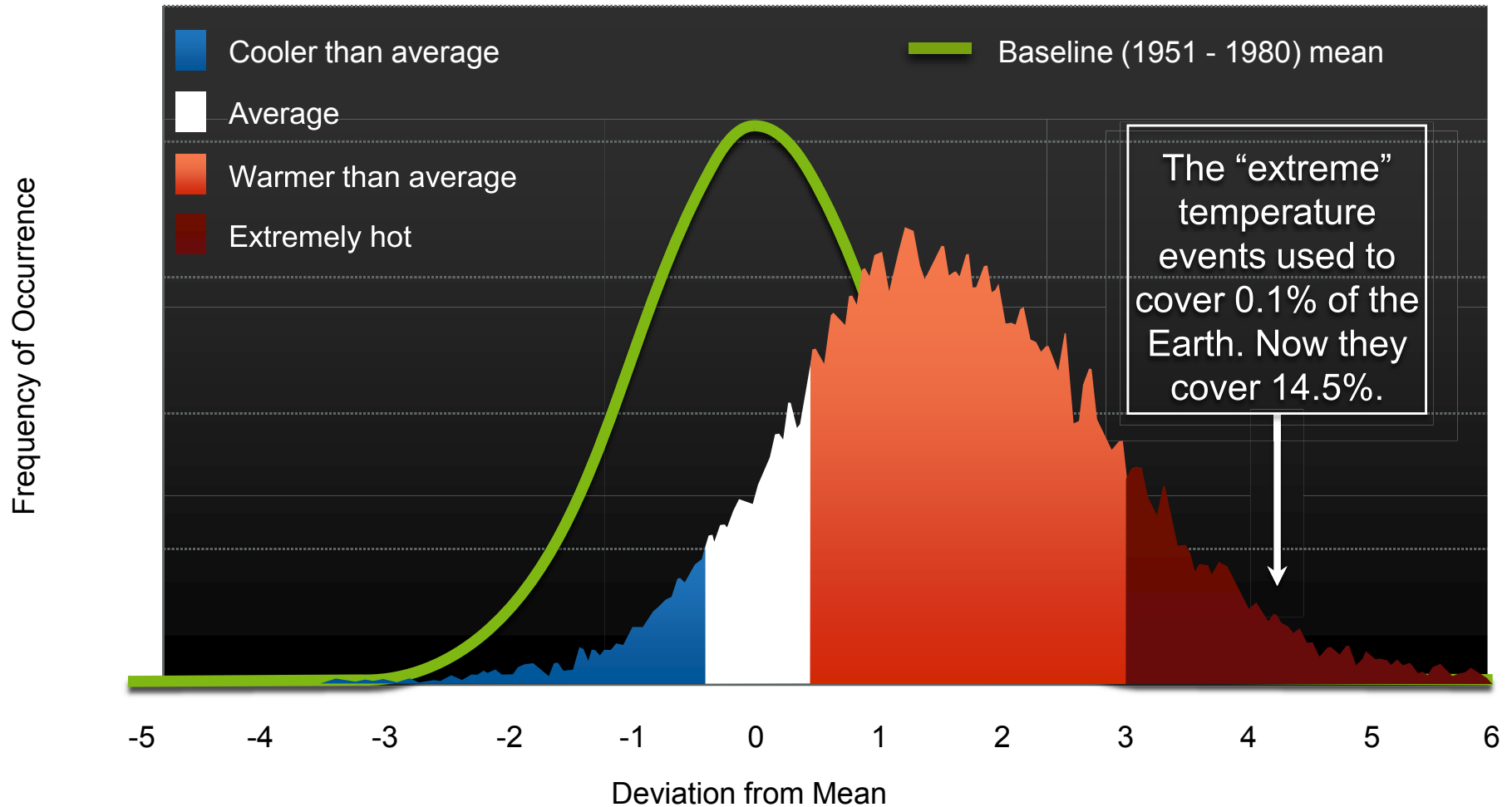
1983 – 1993



1994 – 2004



2005 – 2015



EXTREME HEAT



elevated risks for outdoor workers
40,000+ people employed in the ag
sector in SB and Ventura counties

INCREASED ENERGY NEEDS

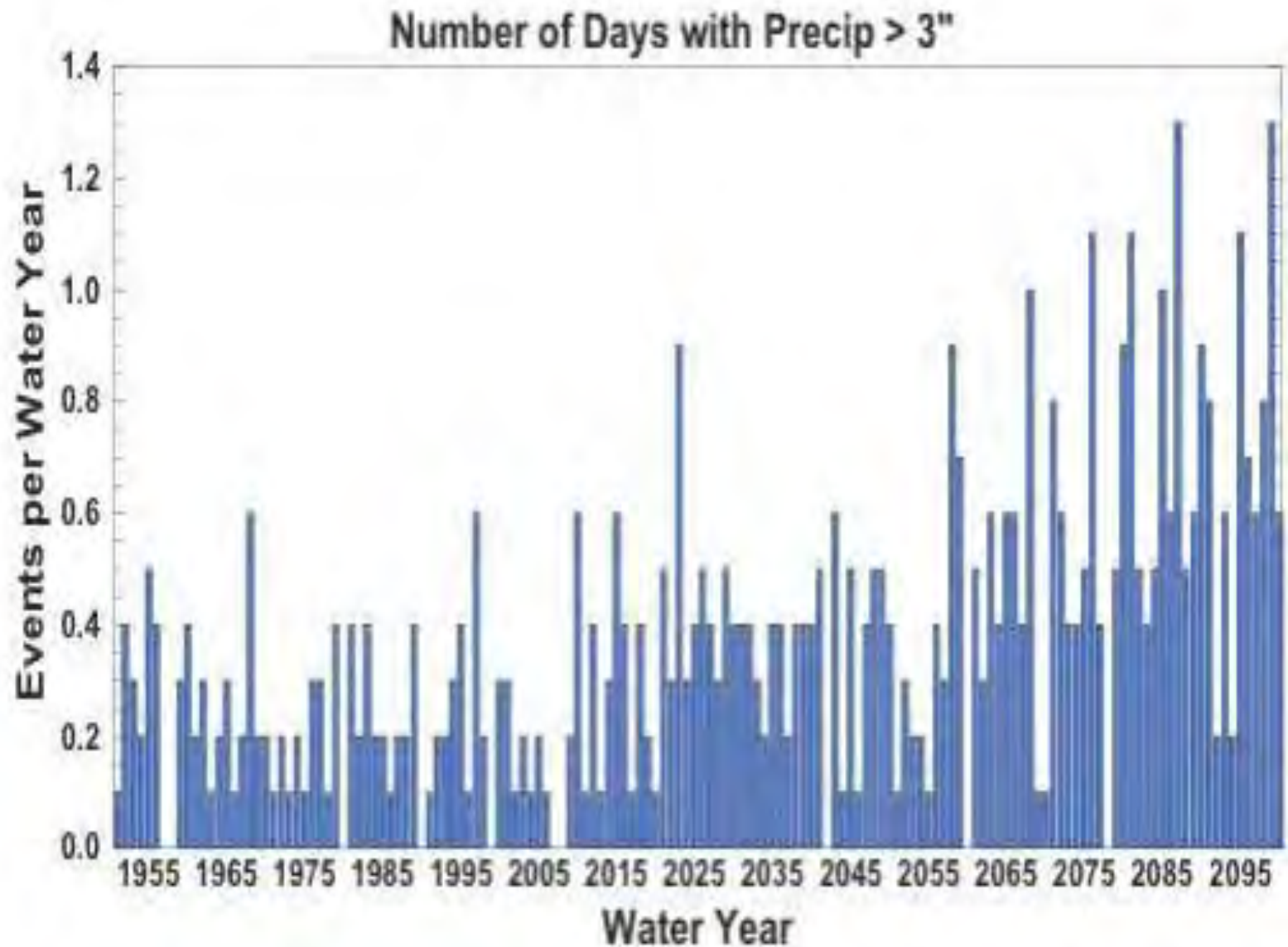


WATER SUPPLY



**Agriculture is a key industry
for Central Coast counties.**

PRECIPITATION - FEWER BUT MORE INTENSE STORMS

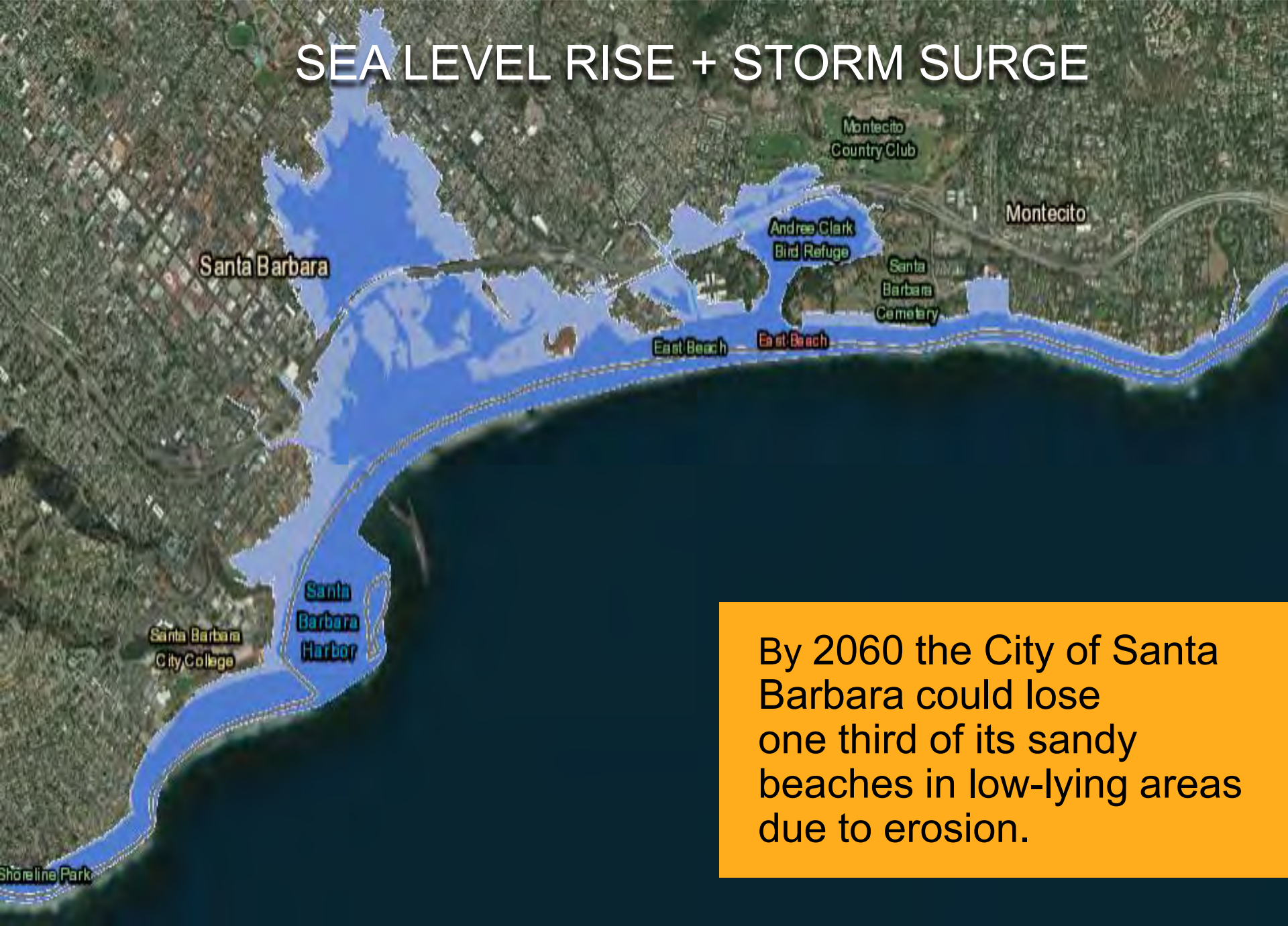


SEA LEVEL RISE + STORM SURGE



Two meters of sea level rise + a 100 year storm event will expose 11,780 SB County residents and \$2.4b in property.

SEA LEVEL RISE + STORM SURGE



By 2060 the City of Santa Barbara could lose one third of its sandy beaches in low-lying areas due to erosion.

SEA LEVEL RISE + STORM SURGE



Sea level rise and storm surges threaten critical infrastructure: Hwy 101, the airport, and the wastewater treatment & desal plants

Post
Apocalyptic
Fiction
has been moved
to our
CURRENT
AFFAIRS
section.

What gives us hope?



BUILDING A RESILIENT ENERGY SYSTEM

The Central Coast
region has installed
more than
**1.3 gigawatts of
solar**



CITIES THAT HAVE PLEDGED 100% RENEWABLES

Abita Springs, LA
Amherst, MA
Angel Fire, NM
Atlanta, GA
Berkeley, CA
Blacksburg, VA
Boulder, CO
Breckenridge, CO
Cambridge, MA
Chula Vista, CA
Clarkston, GA
Cleveland, OH
Columbia, SC
Concord, NH
Cornish, NH
Culver City, CA
Del Mar, CA
Denton, TX
Downingtown, PA
Eagle Nest, NM

East Hampton, NY
Eau Claire, WI
Edmonds, WA
Encinitas, CA
Eureka, CA
Fayetteville, AR
Fort Collins, CO
Goleta, CA
Hanover, NH
Hillsborough, NC
Kennett Township, PA
La Mesa, CA
Lafayette, CO
Largo, FL
Longmont, CO
Lowell, MA
Madison, WI
Menlo Park, CA
Middleton, WI
Minneapolis, MN

Moab, UT
Monterey, CA
Nederland, CO
Nevada City, CA
New Brunswick, NJ
Norman, OK
Northampton, MA
Ojai, CA
Orlando, FL
Palo Alto, CA
Park City, UT
Phoenixville, PA
Plainfield, NH
Portland, OR
Pueblo, CO
Questa, NM
Red River, NM
Salt Lake City, UT
San Diego, CA

San Francisco, CA
San Jose, CA
San Luis Obispo, CA
Santa Barbara, CA
Sarasota, FL
South Lake Tahoe, Ca
Southampton, NY
Spokane, WA
St. Louis, MO
St. Louis Park, MN
St. Petersburg, FL
Taos, NM
Taos Ski Valley, NM
Truckee, CA
West Chester, PA
Windsor, MA

BUILDING A RESILIENT TRANSPORTATION SYSTEM

Many cities on the Central Coast boast electric vehicle adoption rates at **3 to 4 times the national average.**



BUILDING A RESILIENT FOOD SYSTEM



Carbon farming is a way to capture excess carbon from the atmosphere and store it in soil.

ENGAGING EVERYONE





Mission:

Engage all communities throughout the region to help ensure a **resilient and low-carbon Central Coast** prepared for the impacts of climate change.

Governor's Office of Planning & Research

Integrated Climate Adaptation and Resiliency Program

www.opr.ca.gov/planning/icarp

Georgetown Climate Center

Adaptation Clearinghouse

www.adaptationclearinghouse.org



Community
Environmental
Council

www.cecsb.org